

# 唐響

伍卓賢曲  
(2017修訂合奏版)

揚琴

唐響

伍卓賢曲  
(2017修訂合奏版)

夢 ♩ = 62 ca. 稍自由

♩ = 56

(氣聲) 23

*ff* 唏!

27

32

37

42

47

3

53

*mf* *f*

56

*mp* *p*

60

64

67

70

74

79

82

85

89

94 **盛** ♩ = 78 (反竹)

*ppp*

97

99 *p*

101

103 *f*

105

107

109 *ff*



$\text{♩} = 156$

111 (正常)

115

118

121 *mf* *ff* *mp*

124

127

131 *f* *p*

135 *mf*

V.S.

140

*mp*

144

148

*mf* *mp*

152

156

160

164

168

*f* *mf*

172

176

180

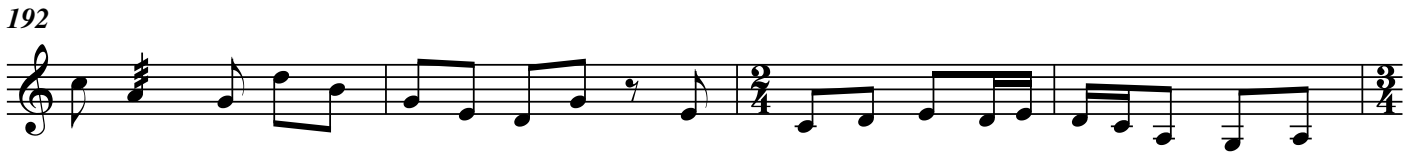
184



188



192



196



200



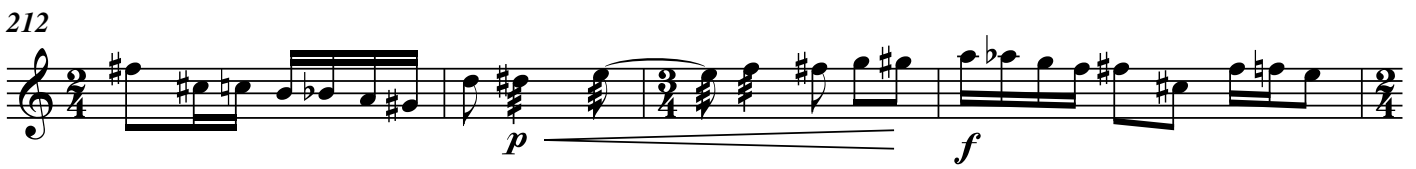
204



208



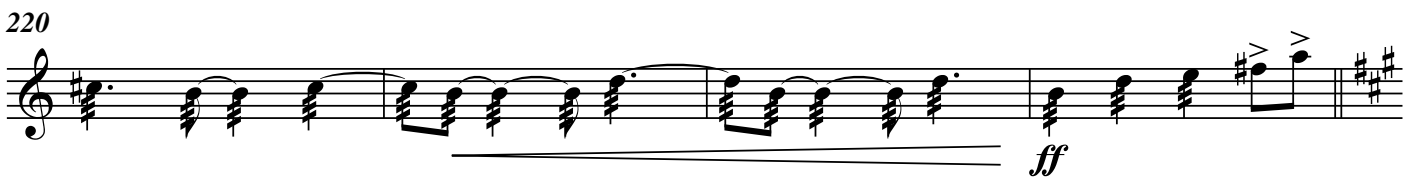
212




216



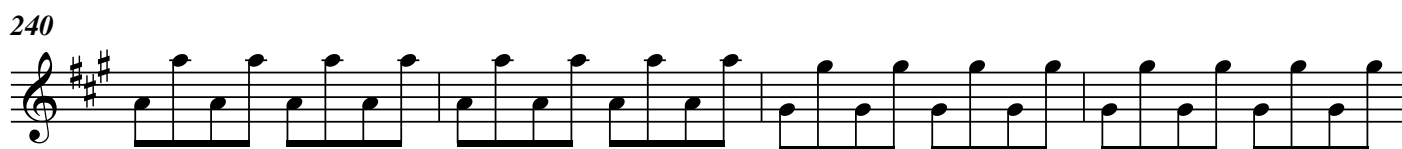
220



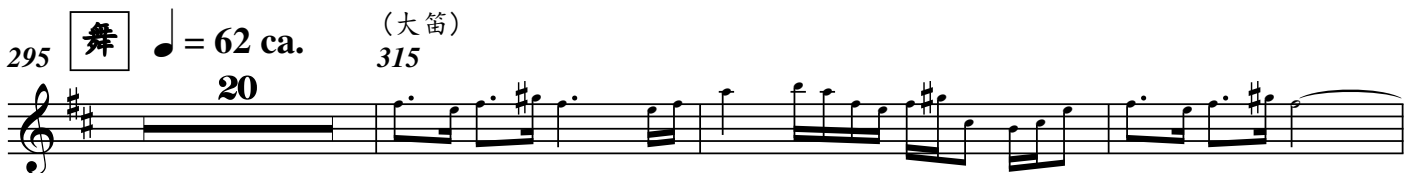
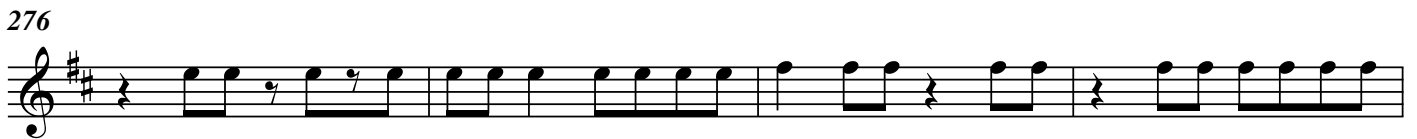
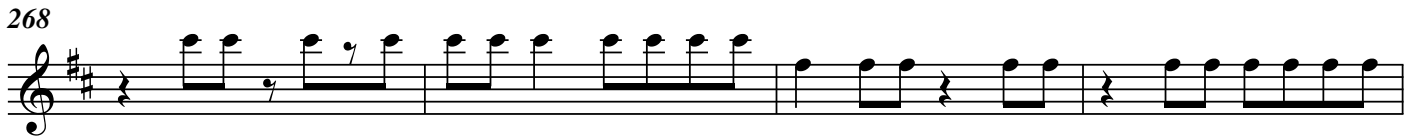
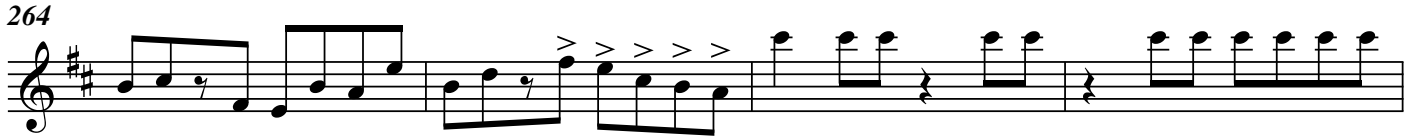
224



V.S.







318 *mf*

321 6

324 3 6 6

327 6 6 6 3 6

329 3 3 6 3 6

331 6 6 6 3 6

333 3 3

336 *f*

340

342



Musical notation for measure 342, featuring a treble clef, a key signature of two sharps (F# and C#), and a 4/4 time signature. The notation includes a sixteenth-note triplet marked with a '6' above it.

344



Musical notation for measure 344, featuring a treble clef, a key signature of two sharps (F# and C#), and a 4/4 time signature. The notation includes a sixteenth-note triplet.

345



Musical notation for measure 345, featuring a treble clef, a key signature of two sharps (F# and C#), and a 4/4 time signature. The notation includes a sixteenth-note triplet.

346



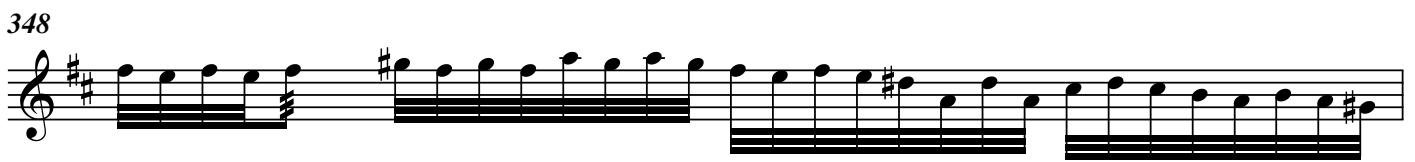
Musical notation for measure 346, featuring a treble clef, a key signature of two sharps (F# and C#), and a 4/4 time signature. The notation includes a sixteenth-note triplet.

347



Musical notation for measure 347, featuring a treble clef, a key signature of two sharps (F# and C#), and a 4/4 time signature. The notation includes a sixteenth-note triplet.

348



Musical notation for measure 348, featuring a treble clef, a key signature of two sharps (F# and C#), and a 4/4 time signature. The notation includes a sixteenth-note triplet.

349



Musical notation for measure 349, featuring a treble clef, a key signature of two sharps (F# and C#), and a 4/4 time signature. The notation includes a sixteenth-note triplet.

350



Musical notation for measure 350, featuring a treble clef, a key signature of two sharps (F# and C#), and a 4/4 time signature. The notation includes a sixteenth-note triplet.

351

稍加快



Musical notation for measure 351, featuring a treble clef, a key signature of two sharps (F# and C#), and a 4/4 time signature. The notation includes a sixteenth-note triplet and a dynamic marking of *ff* (fortissimo) at the end of the measure.

353 同  $\bullet = 56$  8  $361 \bullet = 66$  *f*

363

365  $\bullet = 69$

366

367

368

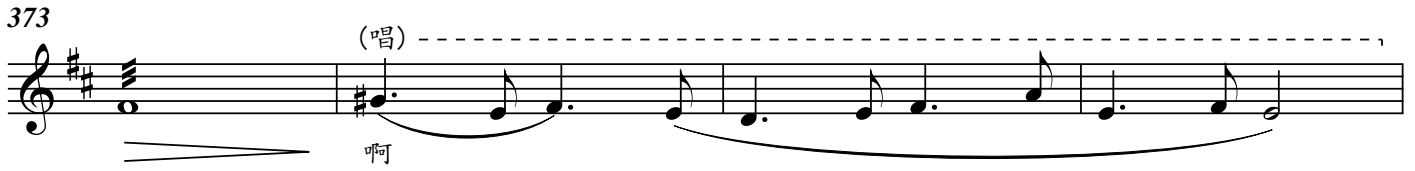
369

370

371

372

373 (唱) 啊



377 (一邊彈一邊唱旋律) *mf*



381 *f*



382



384



385



386



387



388



389 稍慢 *ff* *fff*

