

十面埋伏

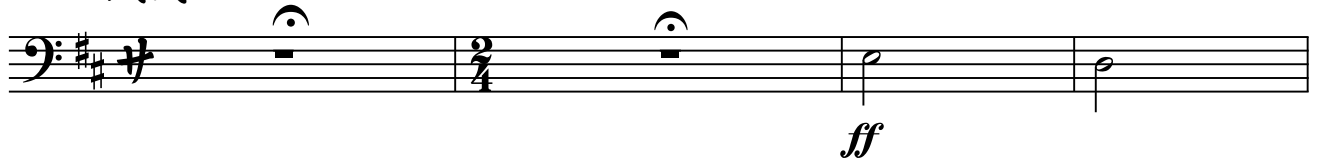
低音嗩吶

劉文金 趙咏山 編

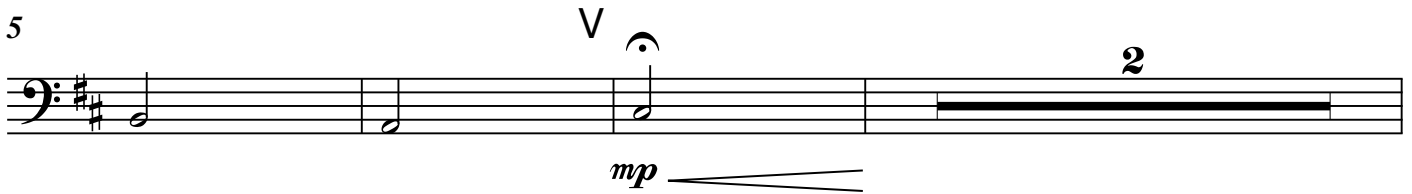
【一】列營

1

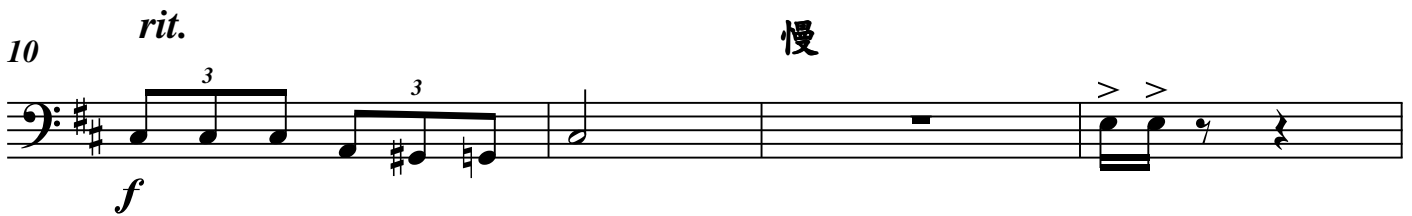
威武地



5



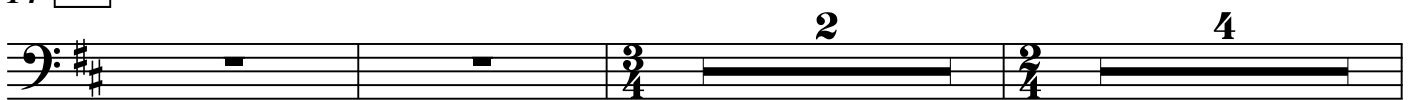
10



14

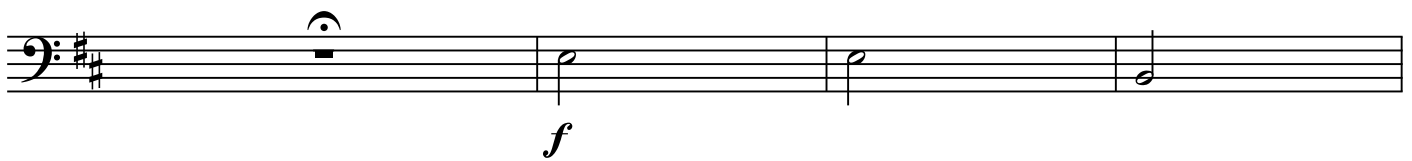
2

由慢漸快 行板



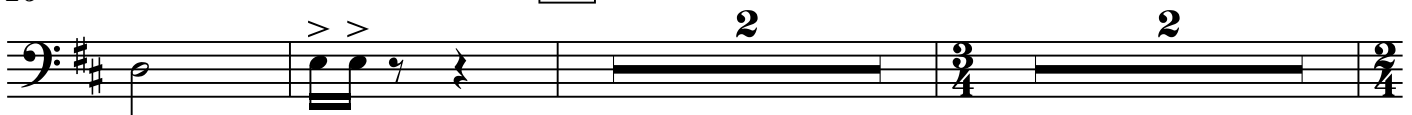
22

稍穩

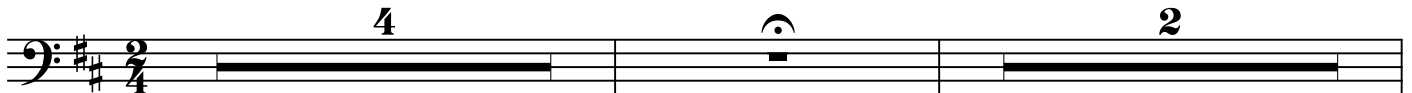


26

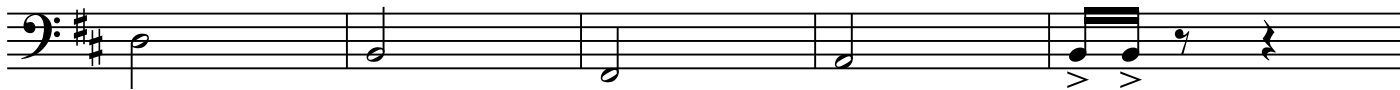
3 行板 由慢漸快



32



39

44 **4** 由慢漸快

47

**【二】吹打**51 **1** 自由

中速

2**3**80 **4**

13

rit.**1** **【三】埋伏**

96 由慢漸快 小快板 稍漸慢

4

14

2

**2** 118 稍慢些的小快板 漸快

4

2

2

128 **3**

136 *rit.* 稍慢，較自由

ff

139 4

3

142 漸快，漸急迫 5 稍慢

f

150 突轉小快板 1 2 【四】小戰 快板 11 8

171 *rit.* 3 中速 楚歌 8

ff

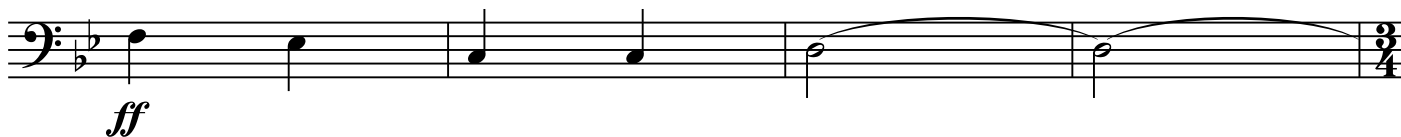
184 1 由慢漸快 自由 *ff*

ff

189 *rit.*

192 快板 2 快板 8 *mp*

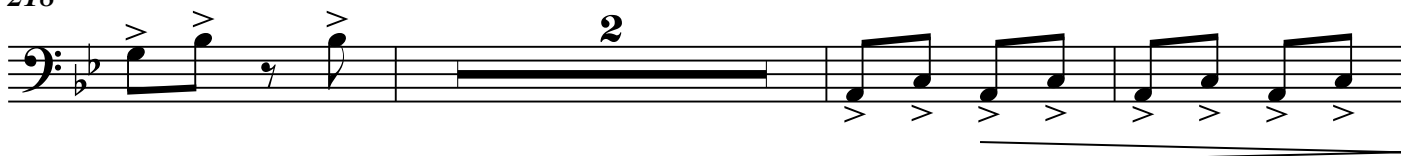
mp

203 3207 4

211

215 5

218

223 6

227

7

231



235 8

240 240a 240b 240c

241 rit.

245 9 快速 rit.

257 更慢些

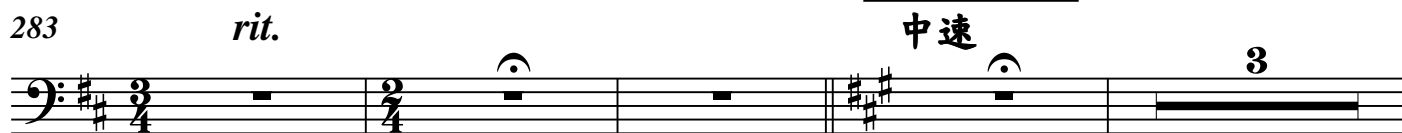
263 1 【六】烏江
中速，稍慢

270 2 渐快

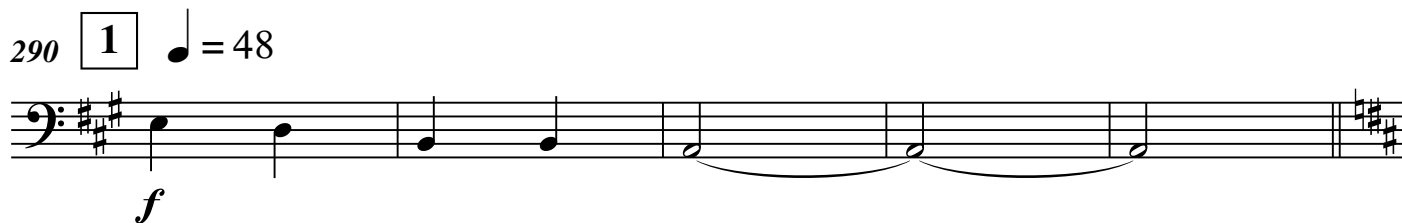
274 3 4 5

【七】奏凱

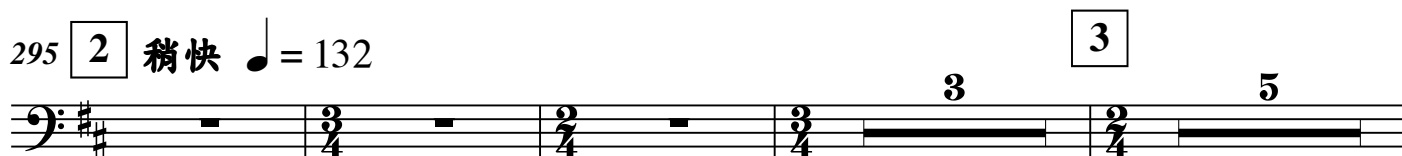
283 *rit.* 中速 3



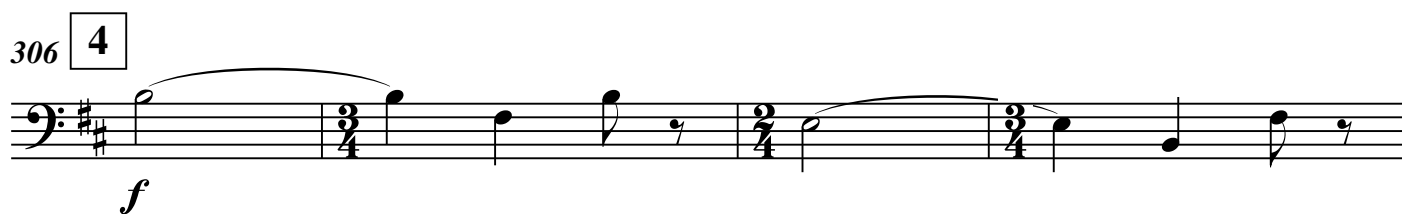
290 1 ♩ = 48 *f*



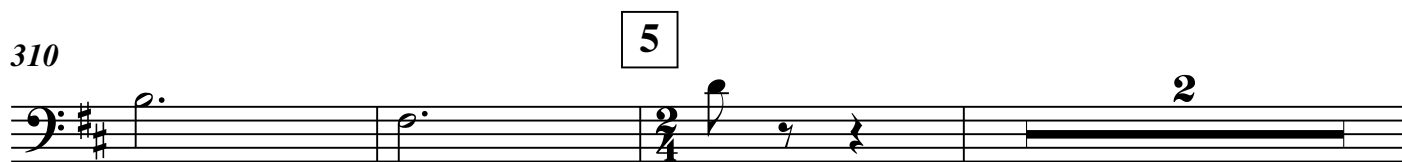
295 2 稍快 ♩ = 132 3 5



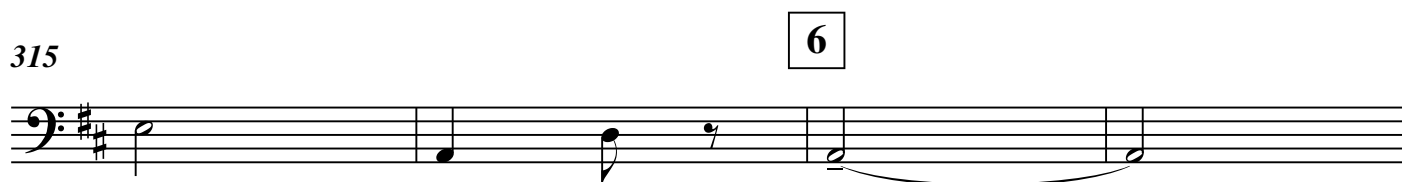
306 4 *f*




310 5 2



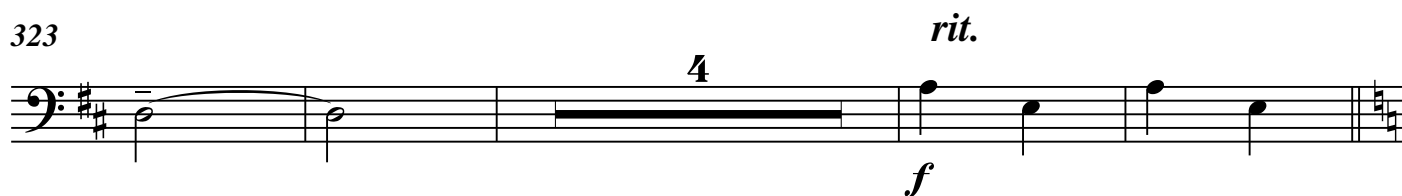
315 6



319



323 4 *rit.* *f*



331

Musical notation for measure 331, bass clef, 3/4 time signature. The measure contains rests in the first two beats, followed by a triplet of eighth notes in the third beat, and a pair of eighth notes in the fourth beat.

339

Musical notation for measure 339, bass clef, 3/4 time signature. The measure starts with a crescendo hairpin and a forte (*f*) dynamic. It features a melodic line with eighth and quarter notes, including a triplet of eighth notes.

343

Musical notation for measure 343, bass clef, 2/4 time signature. The measure includes a ritardando (*rit.*) hairpin and features a triplet of eighth notes followed by a pair of eighth notes.

351 放寬 ♩ = 48

Musical notation for measure 351, bass clef. The tempo is marked as "放寬" (Ad libitum) with a quarter note equal to 48 (♩ = 48). The measure features a fortissimo (*ff*) dynamic and a melodic line with quarter notes.

355

Musical notation for measure 355, bass clef. The measure features a melodic line with quarter notes and a final half note with a fermata.

359

Musical notation for measure 359, bass clef. The measure features a melodic line with quarter notes and a final half note with a fermata.

363

Musical notation for measure 363, bass clef. The measure features a melodic line with quarter notes and two triplets of eighth notes.

367 放慢

Musical notation for measure 367, bass clef. The tempo is marked as "放慢" (Ritardando). The measure features a decrescendo hairpin and a piano (*p*) dynamic. It consists of a series of chords, each with a fermata.