

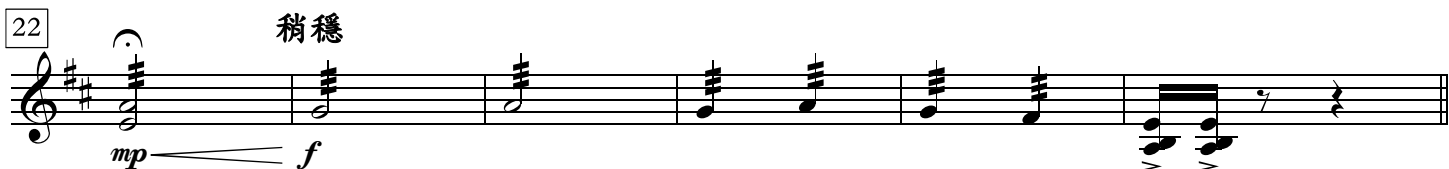
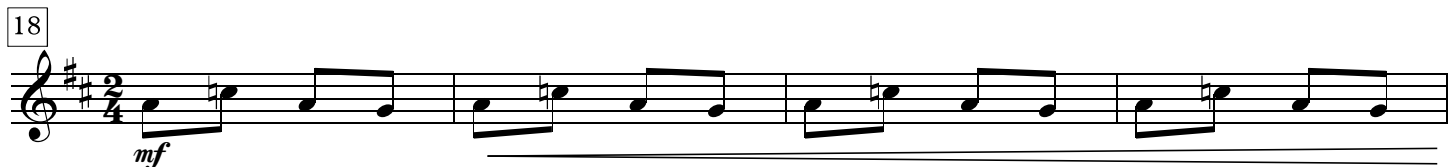
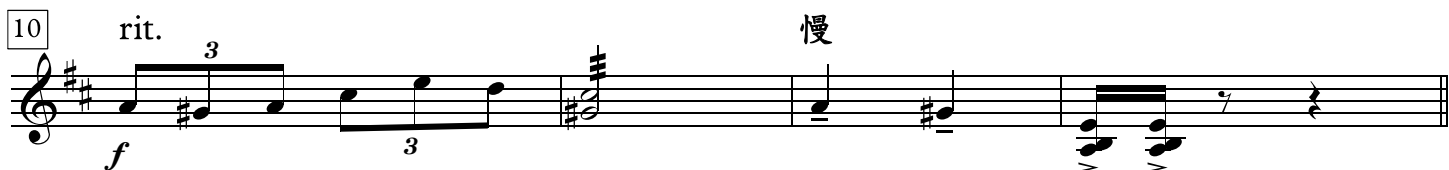
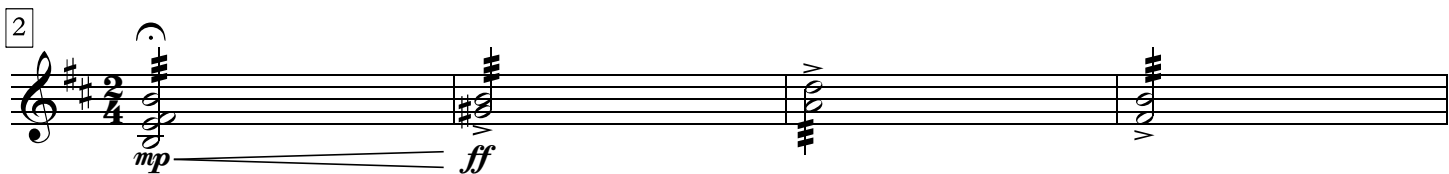
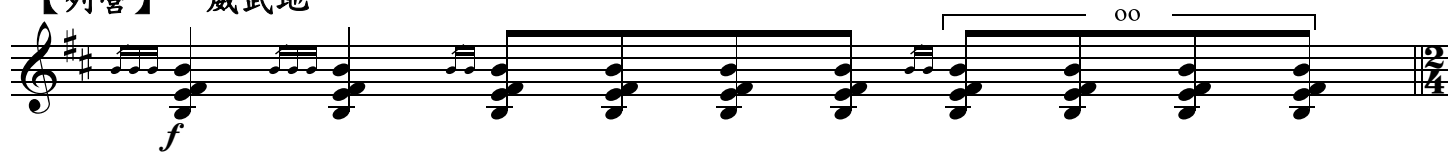
# 賽馬會中樂360

## 十面埋伏

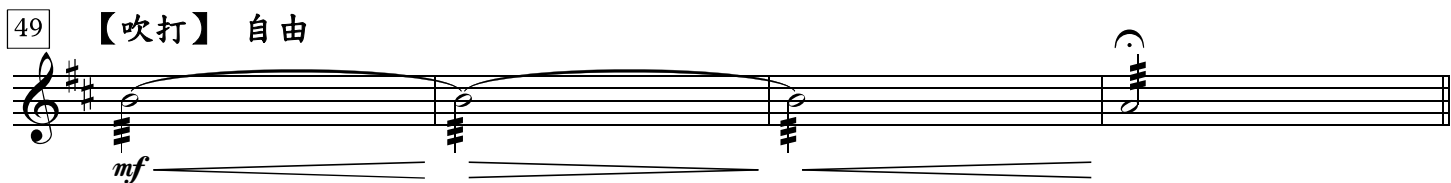
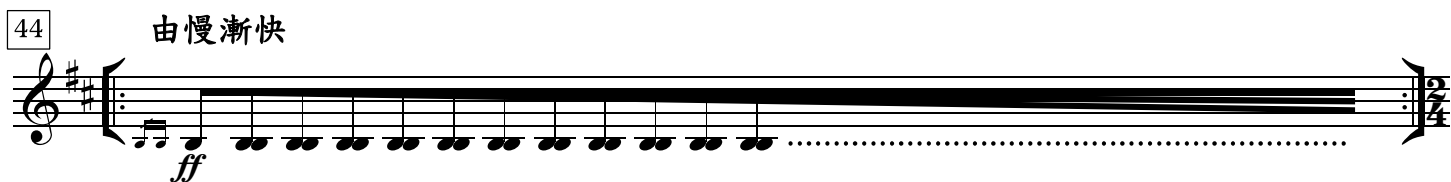
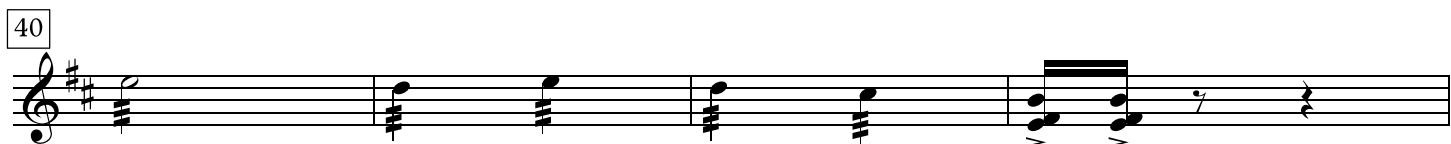
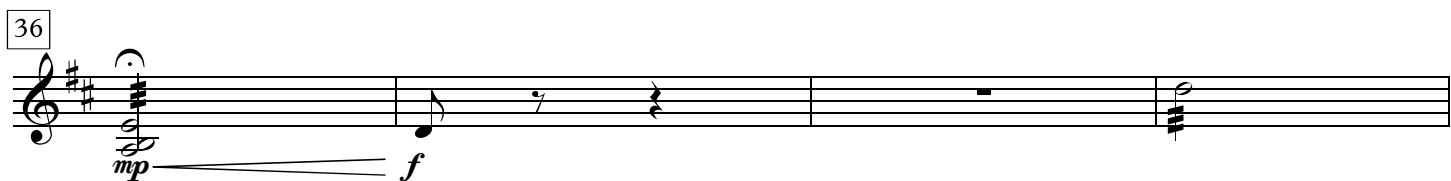
(中級)

劉文金、趙咏山 編曲  
譚逸昇 改編

【列營】 威武地



28 由慢漸快 行板



65 

69 

73 

77 

81 **【埋伏】**  
(絞弦) **由慢漸快**  


87 

92 

98 **稍漸慢**  


104 

110 

116 

122 稍慢

*ff* *f*

126 突轉快板

*mf*

130

*f*

134

138

*mf*

144 rit.

*ff*

150 由慢漸快

*f*

153 自由

*ff* rit.

158 快板

*p* rit.

161

*fff*

167 快速

173 更慢些

180 【烏江】  
中速稍慢

186 (二胡)

190 div. accel.  
mp

194 f

198 mf

202 【奏凱】  
中速

206 ♩ = 48  
f

210 稍快 ♩ = 132  
mf

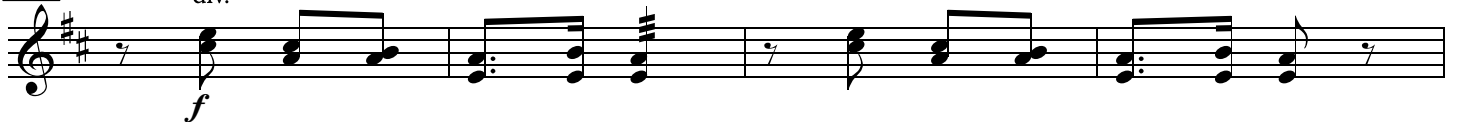
214



218



222



226



230



234



238



242



246



250

