

中胡

賽馬會中樂360

唐響 (初級)

伍卓賢 曲、編

夢

♩ = 62 ca. 稍自由
("唏!" 氣聲叫一聲)

Musical notation for the first system of the piece '夢'. It is written in treble clef with a 4/4 time signature. The key signature has one sharp (F#). The notation includes a series of chords in the first three measures, followed by a melodic line in the last three measures. Dynamics markings include *fff*, *pp*, and *f*. There are also hairpins indicating volume changes.

Musical notation for the second system of the piece '夢'. It starts with a measure number '5' in a box. The notation continues the melodic line from the first system, ending with a measure marked with a '4' above it and a *mp* dynamic marking.

Musical notation for the third system of the piece '夢'. It starts with a measure number '12' in a box. The notation continues the melodic line, featuring a long note in the second measure.

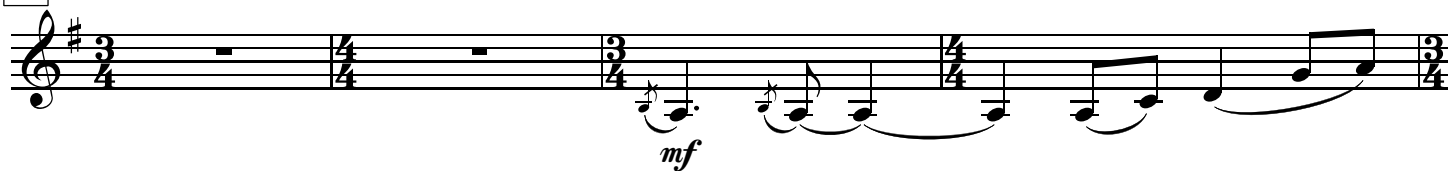
Musical notation for the fourth system of the piece '夢'. It starts with a measure number '16' in a box. The notation continues the melodic line, ending with a measure marked with a '5' above it and a key signature change to two sharps (F# and C#).

Musical notation for the fifth system of the piece '夢'. It starts with a measure number '25' in a box. The tempo marking is ♩ = 56 ca. (等). The notation is written in treble clef with a 3/4 time signature and a key signature of two sharps. It features a series of eighth notes and quarter notes.

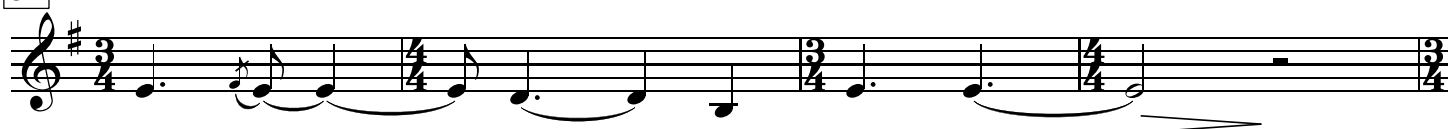
29



33



37



41



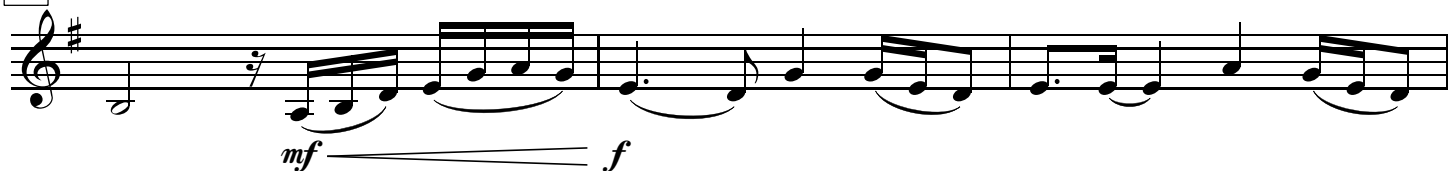
45



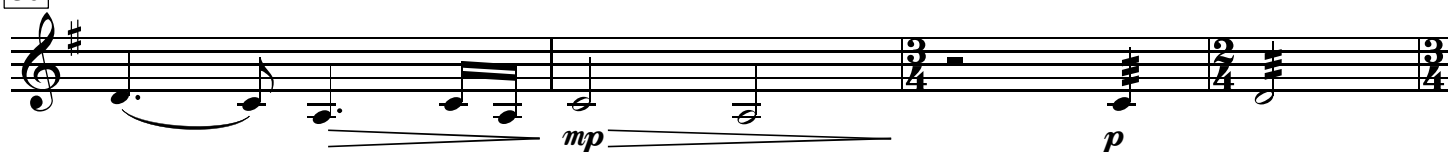
49



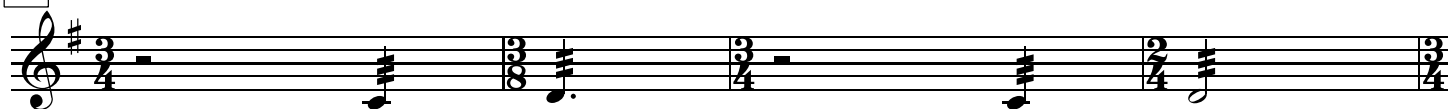
53



56



60



64



68



71



75



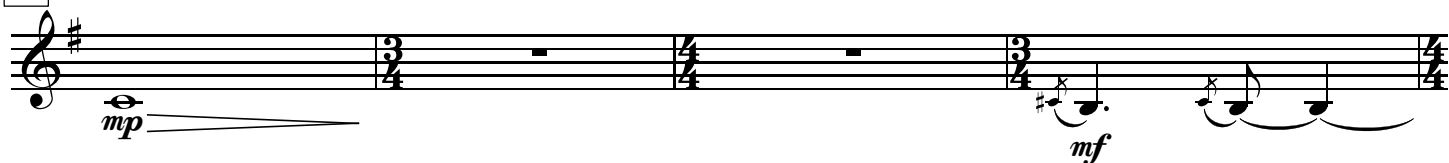
79



83



86



90

